

1995 Boys' Sweet Sixteen Action

semifinals

**BRECKINRIDGE
COUNTY**

VS.

MARSHALL COUNTY

March 18, 1995

**Rupp Arena
Lexington, Kentucky**

OFFICIAL STATISTICS BOOKLET

VISITORS (Last Name, First)

NO.	MARSHALL COUNTY	Tot FG		3-POINT		FT		Rebounds					PF	TP	A	TO	BLK	S	TIME
		FG	FGA	FG	FGA	FT	FTA	OFF	DEF	TOT									
42	LANGHI, DAN	6	14	2	6	5	6	5	4	9	3	19	1	5	0	0	30:45		
44	CLEVIDENCE, TODD	1	4	0	1	3	4	3	2	5	4	5	0	2	0	0	28:56		
00	SANDERS, ROBERT	2	6	0	0	1	2	4	1	5	0	5	0	0	0	0	30:31		
12	BREWER, RORY	1	2	1	2	1	2	0	1	1	4	4	0	5	0	2	29:17		
33	STORY, JEREMY	1	9	0	4	4	4	1	0	1	4	6	4	6	0	0	26:57		
35	MORTON, KELLY	0	0	0	0	0	0	0	0	0	0	0	0	0	0	0	3:52		
31	FRALEY, CHARLIE	0	0	0	0	0	0	0	0	0	0	0	0	0	0	0	3:20		
23	DARNELL, JEFF	0	1	0	1	0	0	0	0	0	0	0	0	0	0	0	0:42		
22	BURKEEN, BRIAN	0	0	0	0	0	0	0	0	0	0	0	0	0	0	0	0:42		
25	LEEPER, KYLE	0	0	0	0	0	0	0	0	0	0	0	0	0	0	0	2:49		
30	ENGLISH, MARK	0	0	0	0	0	0	0	0	0	0	0	0	0	0	0	0:45		
10	HENSON, CHAD	0	0	0	0	0	0	0	0	0	0	0	0	0	0	0	0:42		
20	BARKETT, JUSTIN	0	0	0	0	0	0	0	1	1	0	0	0	1	0	0	0:42		
TEAM REBOUNDS (INCLUDED IN TOTALS)																			
TOTALS		11	36	3	14	14	18	14	10	24	15	39	6	19	0	2	160		
Percentages:		Game		FG		3-PT.		FT		PF		TP		S		TIME			
Period 1		4/6		66.7%		0/2		0.0%		1/2		50.0%		5/7		71.4%			
Period 2		4/9		44.4%		1/2		0.0%		0/2		0.0%		1/3		33.3%			
Period 3		1/10		10.0%		0/2		0.0%		0/2		0.0%		6/6		100.0%			
Period 4		2/11		18.2%		2/8		25.0%											

HOME (Last Name, First)

NO.	BRECKINRIDGE COUNTY	Tot FG		3-POINT		FT		Rebounds					PF	TP	A	TO	BLK	S	TIME
		FG	FGA	FG	FGA	FT	FTA	OFF	DEF	TOT									
34	WHITWORTH, JARED	1	3	0	1	2	2	1	0	1	3	4	1	0	0	1	5	24:46	
42	SILLS, JAY	7	9	0	0	0	0	1	2	3	3	14	1	0	0	1	27:33		
32	MATTINGLY, ADAM	1	3	0	0	1	2	1	1	2	3	3	4	2	1	3	23:35		
12	PAYNE, BRADLEY	3	6	1	2	2	3	0	2	2	4	9	2	2	0	1	27:19		
20	CRITCHELOW, PAT	9	10	3	3	4	7	0	3	3	3	25	2	3	0	3	29:23		
41	WILLIAMS, CARL	4	5	0	0	1	1	1	4	5	2	9	0	1	1	0	16:37		
40	MATTINGLY, MATT	0	0	0	0	0	0	0	0	0	0	0	0	0	0	0	3:45		
50	CALIST, JON	1	2	0	0	0	0	1	1	2	0	2	0	0	0	0	2:40		
04	BURNETT, JEREMY	0	0	0	0	0	0	0	0	0	0	0	0	0	0	0	0:47		
10	CARBY, BRAD	0	0	0	0	0	0	0	0	0	0	0	0	0	0	0	1:29		
30	TAUL, BRANDON	1	2	0	0	0	0	1	0	1	0	2	0	0	0	1	0:42		
51	WALKER, ANTHONY	0	0	0	0	0	0	0	0	0	0	0	0	0	0	0	0:42		
11	MITCHELL, LEON	0	0	0	0	0	0	0	0	0	0	0	0	0	0	0	0:42		
TEAM REBOUNDS (INCLUDED IN TOTALS)																			
TOTALS		27	40	4	6	10	15	7	13	20	18	68	11	9	3	14	160		
Percentages:		Game		FG		3-PT.		FT		PF		TP		S		TIME			
Period 1		5/12		41.7%		3/4		75.0%		1/2		50.0%		0/0		0.0%			
Period 2		5/7		71.4%		1/2		50.0%		1/2		50.0%		1/2		50.0%			
Period 3		11/12		91.7%		0/0		0.0%		0/0		0.0%		7/11		63.6%			
Period 4		6/9		66.7%		0/0		0.0%		0/0		0.0%		2/2		100.0%			

OFFICIALS: Mike Ashurst, Sarge Donahue, Alt. - Tony Gray
 Technicals: None
 SCORE BY PERIODS
 MARSHALL COUNTY 10 14 3 12 = 39
 BRECKINRIDGE COUNTY 13 12 29 14 = 68

Attendance: 13,105
 COMMENTS: POINTS OFF TURNOVERS
 MARSHALL COUNTY 9 BRECKINRIDGE COUNTY 32
 SECOND CHANCE POINTS
 MARSHALL COUNTY 7 BRECKINRIDGE COUNTY 6

BRECKINRIDGE COUNTY				MARSHALL COUNTY			
Player	Team			Time	Score	Player	Team
WHITWORTH, JARED, SILLS, JAY, MATTINGLY, ADAM, PAYNE, BRADLEY, CRITCHELOW, PAT				LANGHI, DAN, CLEVIDENCE, TODD, SANDERS, ROBERT, BREWER, RORY, STORY, JEREMY			
			Ball to FIGHTING TIGERS	1	7:17		
			Foul on WHITWORTH, JARED	1	6:46		
1-1	100%	1-2	50.0%	1	6:28	*3-0	
			3 pt 21 ft Left Angle Jump shot by CRITCHELOW, PAT	1	5:52		
			Foul on CRITCHELOW, PAT	1	5:27	3-2*	14 ft Left Angle Jump shot by STORY, JEREMY
				1	5:21	*6-2	1-2 50.0% 1-3 33.3%
2-2	100%	2-5	40.0%	1	3:40	6-4*	Driving Layup by LANGHI, DAN
			3 pt 21 ft Left Angle Jump shot by CRITCHELOW, PAT	1	3:16	6-6*	Turnaround Layup by SANDERS, ROBERT
			Assist by MATTINGLY, ADAM				Assist by STORY, JEREMY
				1	2:45	*8-6	1-2 50.0% 2-4 50.0%
3-4	75.0%	3-10	30.0%	1	2:35		1-1 100% 3-5 60.0%
			16 ft Left Base Line Jump shot by CRITCHELOW, PAT	1	2:34		1
				1	2:19		1
				1	2:19		2
				1	2:19		2
4-5	80.0%	4-11	36.3%	1	2:19	*10-6	
			15 ft Left Angle Jump shot by CRITCHELOW, PAT	1	1:39		
			Foul on SILLS, JAY	1	1:39		
				1	1:39		Sub In: MORTON, KEITH Out: FRALEY, CHARLIE
				1	1:39	10-8*	CLEVIDENCE, TODD, 2 Free Throws made both
5-6	83.3%	5-12	41.6%	1	1:00	*13-8	2-2 100% 2-2 100%
			3 pt 20 ft Circle Jump shot by CRITCHELOW, PAT				
			Assist by PAYNE, BRADLEY	1	0:43	13-10*	14 ft Left Base Line Jump shot by CLEVIDENCE, TODD
							Assist by MORTON, KEITH
							1-1 100% 4-6 66.6%

MARSHALL COUNTY "MARSHALS" vs BRECKINRIDGE COUNTY "FIGHTING TIGERS"
1st Half Play by Play

PAGE : 2

Tip off at 10:00 A.M. on 03/18/95 at BOY'S SWEET 16, LEXINGTON
Produced by the KHSAA SWEET 16 Stat Crew with FINAL III
Final III is a product of STONE CONSULTING SERVICE (606)273-3941

BRECKINRIDGE COUNTY				MARSHALL COUNTY			
Player	Team			Time	Score	Player	Team
WHITWORTH, JARED, SILLS, JAY, MATTINGLY, ADAM, PAYNE, BRADLEY, CRITCHELOW, PAT				LANGHI, DAN, CLEVIDENCE, TODD, SANDERS, ROBERT, BREWER, RORY, STORY, JEREMY Ball to MARSHALS			
				2 7:41	13-12*	Jump shot Layup by SANDERS, ROBERT Assist by STORY, JEREMY	2-2 100% 5-7 71.4% 2 3
2	5	Foul on WHITWORTH, JARED Sub In: WILLIAMS, CARL Out: WHITWORTH, JARED		2 6:45			
1	6	Foul on MATTINGLY, ADAM		2 6:45			
1-3	33.3%	6-14 42.8%	Driving Layup by MATTINGLY, ADAM Assist by SILLS, JAY	2 6:38	13-14*	3 ft Lane Driving by LANGHI, DAN	2-5 40.0% 6-10 60.0%
6-7	85.7%	7-15 46.6%	Layup Off Fast Break by CRITCHELOW, PAT	2 6:36			
1-3	33.3%	8-16 50.0%	6 ft Lane SHOT Off Fast Break by SILLS, JAY	2 6:36	13-15*	LANGHI, DAN, 1 Free Throw made	1-1 100% 3-3 100%
				2 6:29	*15-15		
1-2	50.0%	9-17 52.9%	3 pt 20 ft Left Base Line Jump shot by PAYNE, BRADLEY Assist by MATTINGLY, ADAM	2 6:09	*17-15		
2	4	Foul on SILLS, JAY Sub In: MATTINGLY, MATT Out: SILLS, JAY		2 4:58	*19-15		
				2 4:46	19-18*	3 pt 21 ft Right Side Jump shot by BREWER, RORY Assist by LANGHI, DAN	1-1 100% 7-14 50.0% 1 4
				2 4:09	*22-18		
				2 3:55			
				2 3:55			
				2 3:55	22-19*	CLEVIDENCE, TODD, 1 & Bonus made 1st missed 2nd	3-4 75.0% 4-5 80.0%
				2 2:45	22-21*	13 ft Lane Jump shot by LANGHI, DAN Assist by STORY, JEREMY	3-6 50.0% 8-15 53.3% 3 5
1-1	100%	10-19 52.6%	29 ft Follow by WILLIAMS, CARL Foul on MATTINGLY, ADAM	2 2:24	*24-21		
2	8		Sub In: WHITWORTH, JARED Out: MATTINGLY, MATT Sub In: SILLS, JAY Out: MATTINGLY, ADAM	2 2:08			
				2 2:08	24-22*	SANDERS, ROBERT, 2 Free Throws missed 1st made 2nd	1-2 50.0% 5-7 71.4%
				2 2:08			
				2 0:04		Foul on CLEVIDENCE, TODD	1 3
1-2	50.0%	1-2 50.0%	CRITCHELOW, PAT, 2 Free Throws made 1st missed 2nd Foul on WILLIAMS, CARL Sub In: MATTINGLY, ADAM Out: WILLIAMS, CARL Sub In: CALISI, JON Out: SILLS, JAY	2 0:04	*25-22		
1	9			2 0:00			
				2 0:00			
				2 0:00			
				2 0:00	25-24*	STORY, JEREMY, 1 & Bonus made both Subs In: MORTON, KEITH, DARNELL, JEFF, FRALEY, CHARLIE, BURKEEN, BRIAN Out: SANDERS, ROBERT, BREWER, RORY, LANGHI, DAN, CLEVIDENCE, TODD Sub In: LEEPER, KYLE Out: STORY, JEREMY	2-2 100% 7-9 77.7%
				2 0:00			

OFFICIAL NFSHS BASKETBALL BOX SCORE: * OFFICIAL FIRST HALF *
 Date: 03-18-95 Site: BOY'S SWEET 16, LEXINGTON

VISITORS (Last Name, First)

NO.	MARSHALL COUNTY	Tot		3-POINT		FT	FTA	Rebounds			PF	TP	A	TO	BLK	S	TIME				
		FG	FGA	FG	FGA			OFF	DEF	TOT											
42	LANGHI, DAN	3	6	0	1	1	1	2	2	4	0	7	1	1	0	0	15:45				
44	CLEVIDENCE, TODD	1	1	0	0	3	4	1	2	3	1	5	0	0	0	0	16:00				
00	SANDERS, ROBERT	2	3	0	0	1	2	1	1	2	0	5	0	0	0	0	16:00				
12	BREWER, RORY	1	1	1	1	0	0	0	1	1	0	3	0	3	0	1	16:00				
33	STORY, JEREMY	1	4	0	2	2	2	0	0	0	2	4	3	2	0	0	13:41				
35	MORTON, KEITH	0	0	0	0	0	0	0	0	0	0	0	1	0	0	0	1:54				
31	FRALEY, CHARLIE	0	0	0	0	0	0	0	0	0	0	0	0	0	0	0	0:40				
TEAM REBOUNDS (INCLUDED IN TOTALS)																					
TOTALS		8	15	1	4	7	9	4	6	10	3	24	5	6	0	1	80				
Percentages:		HALF		FG		8/15		53.3%		3-PT.		1/4		25.0%		FT		7/9		77.8%	
		Period 1				4/6		66.7%				0/2		0.0%				2/2		100.0%	
		Period 2				4/9		44.4%				1/2		50.0%				5/7		71.4%	

HOME (Last Name, First)

NO.	BRECKINRIDGE COUNTY	Tot		3-POINT		FT	FTA	Rebounds			PF	TP	A	TO	BLK	S	TIME				
		FG	FGA	FG	FGA			OFF	DEF	TOT											
34	WHITWORTH, JARED	0	2	0	1	0	0	1	0	1	2	0	0	0	0	1	11:23				
42	SILLS, JAY	1	3	0	0	0	0	0	1	1	2	2	1	0	0	1	14:13				
32	MATTINGLY, ADAM	1	3	0	0	0	0	1	1	2	2	2	2	1	0	0	13:52				
12	PAYNE, BRADLEY	1	3	1	2	0	0	0	0	0	1	3	1	1	0	1	16:00				
20	CRITCHELOW, PAI	6	7	3	3	1	2	0	2	2	1	16	0	2	0	1	16:00				
41	WILLIAMS, CARL	1	1	0	0	0	0	1	0	1	1	2	0	0	0	0	6:45				
40	MATTINGLY, MATT	0	0	0	0	0	0	0	0	0	0	0	0	0	0	0	1:47				
TEAM REBOUNDS (INCLUDED IN TOTALS)																					
TOTALS		10	19	4	6	1	2	4	4	8	9	25	4	4	0	4	80				
Percentages:		HALF		FG		10/19		52.6%		3-PT.		4/6		66.7%		FT		1/2		50.0%	
		Period 1				5/12		41.7%				3/4		75.0%				0/0		0.0%	
		Period 2				5/7		71.4%				1/2		50.0%				1/2		50.0%	

OFFICIALS: Mike Ashurst, Sarge Donahue, Alt. Technicals: None

- Tony Gray SCORE BY PERIODS

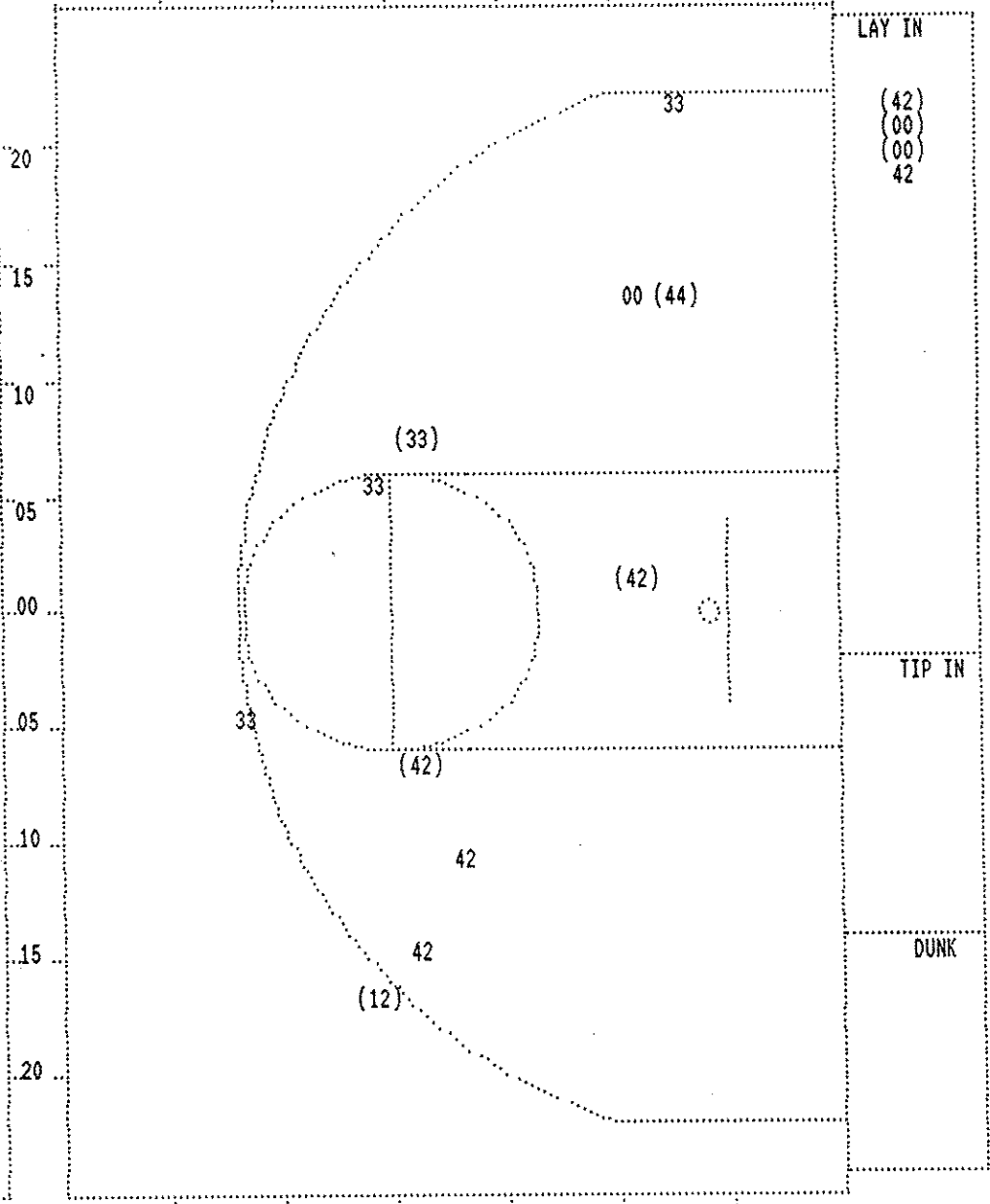
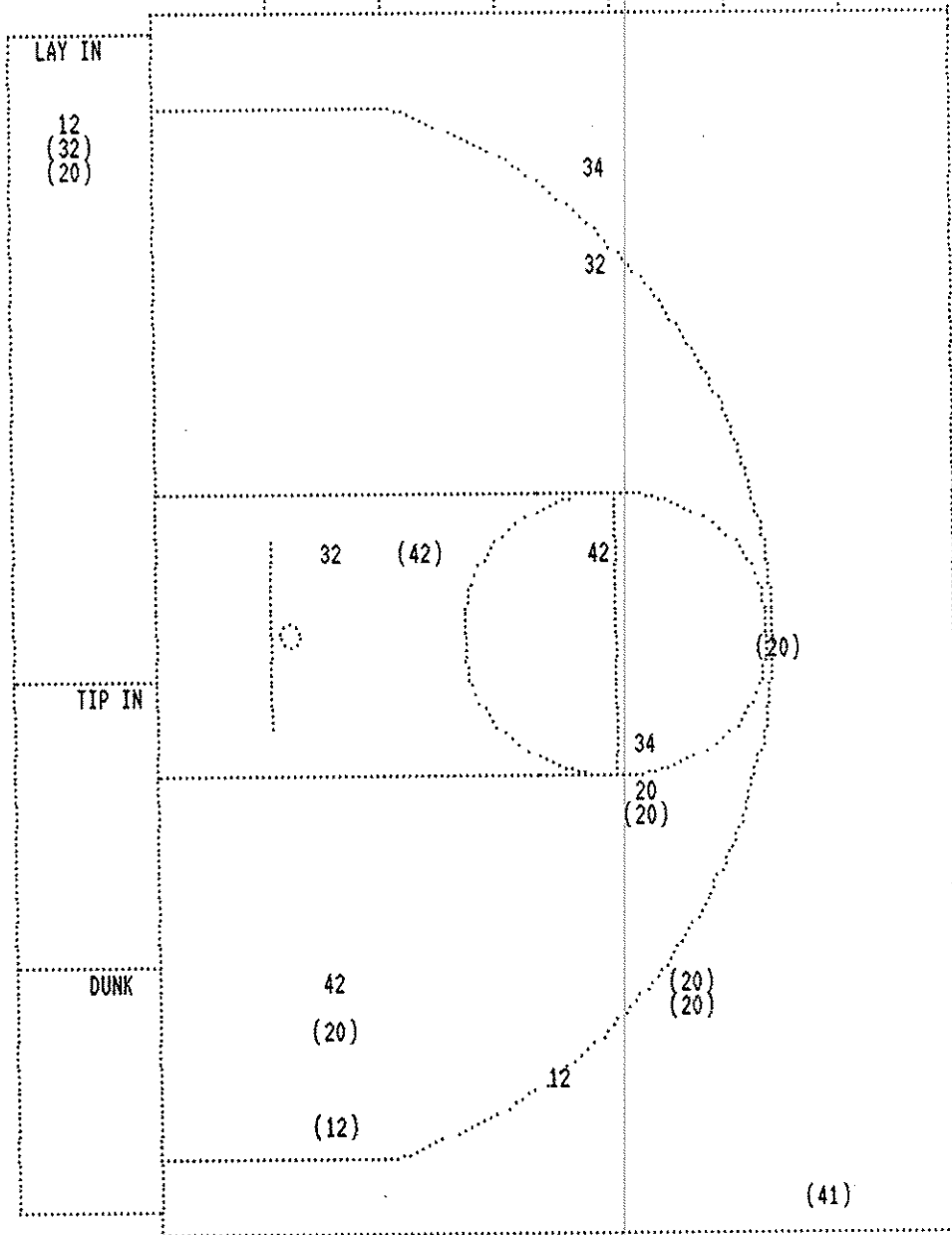
MARSHALL COUNTY	10	14	=	24
BRECKINRIDGE COUNTY	13	12	=	25

Attendance:

COMMENTS: POINTS OFF TURNOVERS SECOND CHANCE POINTS

MARSHALL COUNTY	2	BRECKINRIDGE COUNTY	7	MARSHALL COUNTY	3	BRECKINRIDGE COUNTY	2
-----------------	---	---------------------	---	-----------------	---	---------------------	---

Produced by the KHSAA SWEET 16 Stat Crew with FINAL III - a Product of Stone Consulting (606)273-3941



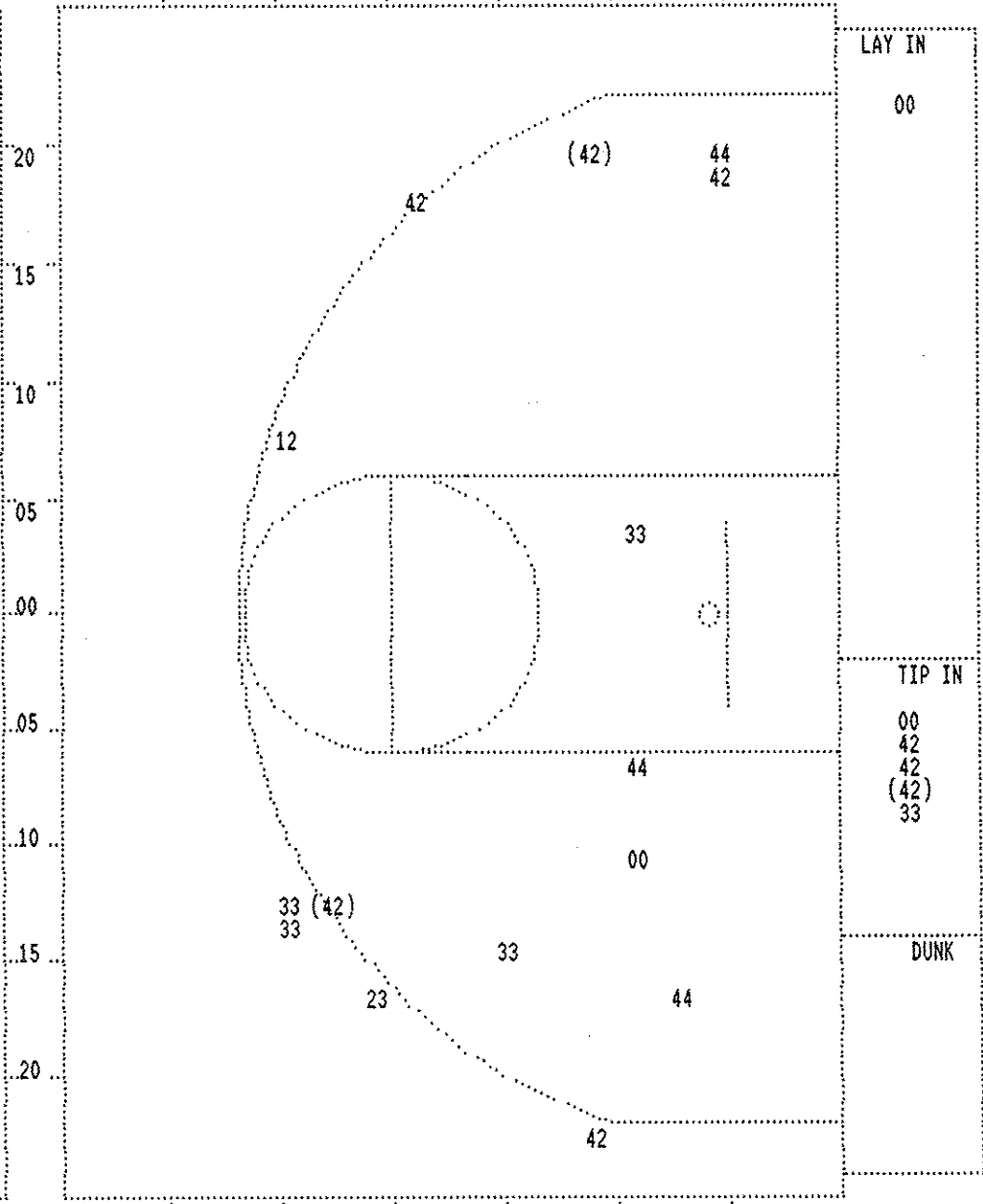
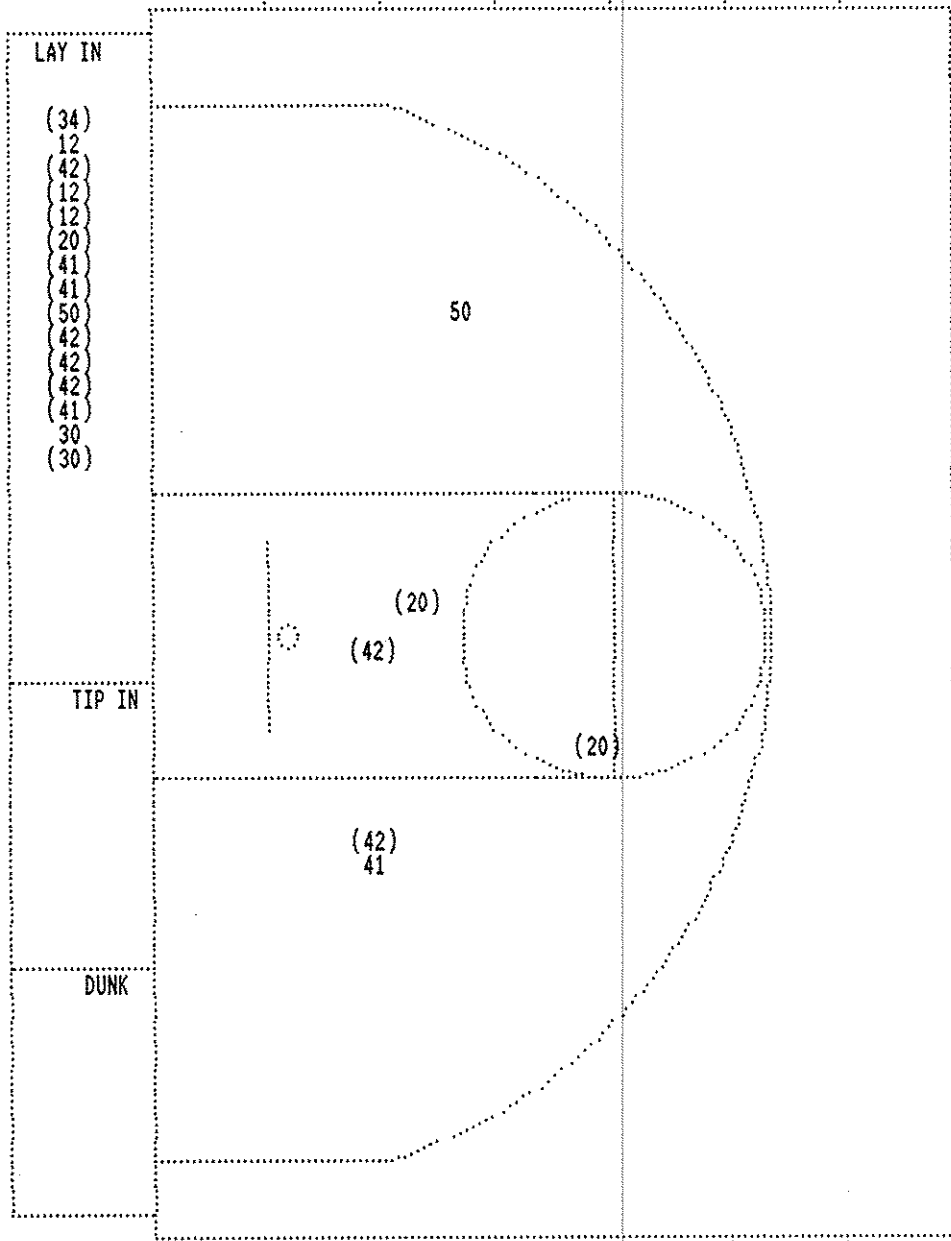
BRECKINRIDGE COUNTY					
Player			Player		
34 - WHITWORTH,	0 / 2	0.0%	41 - WILLIAMS,	1 / 1	100.0%
42 - SILLS, JAY	1 / 3	33.3%			
32 - MATTINGLY,	1 / 3	33.3%			
12 - PAYNE, BRA	1 / 3	33.3%			
20 - CRITCHELOW	6 / 7	85.7%			
Layups	1-9 Ft	10-15 Ft	Over 15 Ft	3 Pointers	Total
3 / 4	1 / 2	1 / 5	1 / 2	4 / 6	10 / 19
75.0%	50.0%	20.0%	50.0%	66.7%	52.6%

MARSHALL COUNTY					
Player			Player		
42 - LANGHI, DA	3 / 6	50.0%			
44 - CLEVIDENCE	1 / 1	100.0%			
00 - SANDERS, R	2 / 3	66.6%			
12 - BREWER, RO	1 / 1	100.0%			
33 - STORY, JER	1 / 4	25.0%			
Layups	1-9 Ft	10-15 Ft	Over 15 Ft	3 Pointers	Total
3 / 4	1 / 1	3 / 6	1 / 4	8 / 15	
75.0%	100.0%	50.0%	25.0%	53.3%	

BRECKINRIDGE COUNTY				Time	Score	MARSHALL COUNTY				
Player	Team						Player	Team		
WHITWORTH, JARED, SILLS, JAY MATTINGLY, ADAM, PAYNE, BRADLEY, CRITCHELOW, PAT						LANGHI, DAN, CLEVIDENCE, TODD, SANDERS, ROBERT, BREWER, RORY, STORY, JEREMY				
1-3	33.3%	11-20	55.0%	3	7:39	*27-24				
2		5								
2-4	50.0%	12-22	54.5%	3	7:16	*29-24				
2-5	40.0%	13-23	56.5%	3	6:58	*31-24				
3		6								
REB: 9 A: 6 BLK: 0 TO: 4 PF: 0 S: 6 FT: 1-2 50.0% FG: 13-23 56.5%				3	6:55		REB: 10 A: 5 BLK: 0 TO: 8 PF: 0 S: 1 FT: 7-9 77.7% FG: 8-15 53.3%			
T I M E - O U T						MARSHALL COUNTY No. 1				
1-2	50.0%	2-4	50.0%	3	6:39		Foul on LANGHI, DAN	1	1	
3-6	50.0%	14-24	58.3%	3	6:39	*32-24				
				3	6:18	*34-24				
				3	6:18		Foul on BREWER, RORY	1	2	
0-1	00.0%	2-5	40.0%	3	6:18					
7-8	87.5%	15-25	60.0%	3	6:15					
4		7		3	6:01	*36-24				
REB: 10 A: 7 BLK: 1 TO: 4 PF: 0 S: 8 FT: 2-5 40.0% FG: 15-25 60.0%				3	6:00		REB: 12 A: 5 BLK: 0 TO: 10 PF: 2 S: 1 FT: 7-9 77.7% FG: 8-16 50.0%			
T I M E - O U T						MARSHALL COUNTY No. 2				
2		1		3	5:34					
3		2		3	5:16					
3		3		3	5:15					
				3	4:48		Foul on BREWER, RORY	2	3	
3-5	60.0%	16-26	61.5%	3	4:48	*38-24				
				3	4:48					
				3	4:09	38-26*	Follow Tip by LANGHI, DAN	4-9	44.4% 9-23 39.1%	
3		4		3	4:08					
				3	4:08		LANGHI, DAN, 1 Free Throw missed	1-2	50.0% 7-10 70.0%	
2-2	100%	17-27	62.9%	3	4:05		Foul on LANGHI, DAN	2	4	
1		8		3	3:50	*40-26				
				3	3:31		Player Control Foul on LANGHI, DAN	3	5	
				3	3:31		Sub In: FRALEY, CHARLIE Out: LANGHI, DAN			
				3	3:22		Foul on BREWER, RORY	3	6	
				3	3:13		Foul on CLEVIDENCE, TODD	2	7	
2-4	50.0%	3-7	42.8%	3	3:13	*41-26	Sub In: LANGHI, DAN Out: FRALEY, CHARLIE			
				3	3:13		Foul on CLEVIDENCE, TODD	3	8	
				3	3:13		Sub In: FRALEY, CHARLIE Out: CLEVIDENCE, TODD			
2-3	66.6%	5-9	55.5%	3	3:13	*43-26				
				3	2:25		Foul on STORY, JEREMY	3	9	
				3	2:25		Sub In: CLEVIDENCE, TODD Out: FRALEY, CHARLIE			
2-2	100%	7-11	63.6%	3	2:25	*45-26				
3-3	100%	18-28	64.2%	3	2:02	*47-26				
				3	2:02		Foul on STORY, JEREMY	4	10	
				3	2:02		Sub In: LEEPER, KYLE Out: STORY, JEREMY			
1-1	100%	8-12	66.6%	3	2:02	*48-26				
2		5		3	1:48					
				3	1:48	48-27*	BREWER, RORY, 2 Free Throws made 1st missed 2nd	1-2	50.0% 8-12 66.6%	
4-6	66.6%	19-29	65.5%	3	1:19	*50-27				
3		6		3	0:58					
8-9	88.8%	20-30	66.6%	3	0:04	*52-27				
				3	0:03		Foul on BREWER, RORY	4	11	

Player	Team	BRECKINRIDGE COUNTY	Time	Score	MARSHALL COUNTY	Player	Team
		Sub In: MATTINGLY, MATT Out: PAYNE, BRADLEY	3	0:03			
		Sub In: CALISI, JON Out: SILLS, JAY	3	0:03			
			3	0:03	Sub In: ENGLISH, MARK Out: BREWER, RORY		
			3	0:00	Sub In: MORTON, KEITH Out: ENGLISH, MARK		
2-5	40.0%	8-13 61.5%	3	0:00			
1-1	100%	21-31 67.7%	3	0:00			
		CRITCHELOW, PAT, 1 Free Throw missed	3	0:00			
		Follow Layup by CALISI, JON	3	0:00	*54-27		

Player	Team	BRECKINRIDGE COUNTY	Time	Score	MARSHALL COUNTY	Player	Team
		WHITWORTH, JARED, SILLS, JAY, MATTINGLY, ADAM, PAYNE, BRADLEY, CRITCHELOW, PAT			SANDERS, ROBERT, STORY, JEREMY, MORTON, KEITH, LANGHI, DAN, CLEVIDENCE, TODD	Ball to MARSHALS	
4	7	Foul on PAYNE, BRADLEY	4 6:49			4-4	100% 10-14 71.4%
		Sub In: WILLIAMS, CARL Out: PAYNE, BRADLEY	4 6:49	54-29*	STORY, JEREMY, 2 Free Throws made both		
5-7	71.4%	22-32 68.7%	4 6:49		Sub In: BREWER, RORY Out: MORTON, KEITH		
9-10	90.0%	23-33 69.6%	4 6:49				
		Driving Layup by SILLS, JAY	4 6:30	*56-29			
		4 ft Lane Jump shot by CRITCHELOW, PAT	4 6:08	*58-29			
		REB: 16 A: 8 BLK: 2 TO: 5 PF: 7	4 6:04		REB: 19 A: 5 BLK: 0 TO: 14 PF: 11		
		S: 10 FT: 8-13 61.5% FG: 23-33 69.6%	T I M E - O U T MARSHALL COUNTY No. 3		S: 1 FT: 10-14 71.4% FG: 9-28 32.1%		
2	8	Foul on WILLIAMS, CARL	4 5:07			3-4	75.0% 12-16 75.0%
		Sub In: MATTINGLY, MATT Out: WHITWORTH, JARED	4 5:07	58-31*	LANGHI, DAN, 2 Free Throws made both		
		Sub In: PAYNE, BRADLEY Out: CRITCHELOW, PAT	4 5:07				
		Sub In: CALISI, JON Out: SILLS, JAY	4 5:07				
		REB: 16 A: 8 BLK: 3 TO: 7 PF: 8	4 5:07		REB: 20 A: 5 BLK: 0 TO: 15 PF: 11		
		S: 11 FT: 8-13 61.5% FG: 23-33 69.6%	No. 1 BRECKINRIDGE COUNTY T I M E - O U T		S: 1 FT: 12-16 75.0% FG: 9-29 31.0%		
			4 4:44	58-34*	3 pt 20 ft Left Side Jump shot by LANGHI, DAN	5-12	41.6% 10-31 32.2%
			4 4:12	58-37*	3 pt 20 ft Right Angle Jump shot by LANGHI, DAN	6-13	46.1% 11-32 34.3%
					Assist by STORY, JEREMY	4	6
		REB: 17 A: 8 BLK: 3 TO: 8 PF: 8	4 3:59		REB: 21 A: 6 BLK: 0 TO: 15 PF: 11		
		S: 11 FT: 8-13 61.5% FG: 23-34 67.6%	No. 2 BRECKINRIDGE COUNTY T I M E - O U T		S: 2 FT: 12-16 75.0% FG: 11-32 34.3%		
		Sub In: CRITCHELOW, PAT Out: PAYNE, BRADLEY	4 3:59				
		Subs In: PAYNE, BRADLEY, WHITWORTH, JARED, SILLS, JAY	4 3:59				
		Out: MATTINGLY, MATT, WILLIAMS, CARL, CALISI, JON	4 3:27		Foul on CLEVIDENCE, TODD	4	12
4-7	57.1%	10-15 66.6%	4 3:26	*60-37			
3	9	CRITCHELOW, PAT, 1 & Bonus made both	4 3:10				
		Foul on SILLS, JAY	4 3:10	60-39*	LANGHI, DAN, 1 & Bonus made both	5-6	83.3% 14-18 77.7%
6-8	75.0%	24-35 68.5%	4 2:50	*62-39			
1	9	Driving Layup by SILLS, JAY	4 2:16		Sub In: FRALEY, CHARLIE Out: CLEVIDENCE, TODD		
		Assist by WHITWORTH, JARED	4 1:51	*64-39			
7-9	77.7%	25-36 69.4%	4 1:29		Sub In: MORTON, KEITH Out: BREWER, RORY		
2	10	Driving Layup by SILLS, JAY	4 1:29		Sub In: LEEPER, KYLE Out: SANDERS, ROBERT		
		Assist by CRITCHELOW, PAT	4 1:29				
		Subs In: BURNETT, JEREMY, CARBY, BRAD, MATTINGLY, MATT, WILLIAMS, CARL,	4 1:29				
		CALISI, JON					
		Out: PAYNE, BRADLEY, CRITCHELOW, PAT, MATTINGLY, ADAM, WHITWORTH, JARED,					
		SILLS, JAY					
4-5	80.0%	26-37 70.2%	4 1:00	*66-39			
1	11	Turnaround Layup by WILLIAMS, CARL	4 0:42		Sub In: DARNELL, JEFF Out: LANGHI, DAN		
		Assist by BURNETT, JEREMY	4 0:42		Sub In: BURKEEN, BRIAN Out: STORY, JEREMY		
			4 0:42		Sub In: HENSON, CHAD Out: MORTON, KEITH		
		Sub In: TAUL, BRANDON Out: MATTINGLY, MATT	4 0:42				
		Sub In: WALKER, ANTHONY Out: BURNETT, JEREMY	4 0:42				
		Sub In: MITCHELL, LEON. Out: WILLIAMS, CARL	4 0:42		Sub In: ENGLISH, MARK Out: FRALEY, CHARLIE		
			4 0:42		Sub In: BARRETT, JUSTIN Out: LEEPER, KYLE		
1-2	50.0%	27-40 67.5%	4 0:00	*68-30			
		Layup Off Fast Break by TAIL, BRANDON					



BRECKINRIDGE COUNTY

Player	1-9 Ft	10-15 Ft	Over 15 Ft	3 Pointers	Total	Player	1-9 Ft	10-15 Ft	Over 15 Ft	3 Pointers	Total
34 - WHITWORTH,	1 / 1	100.0%	41 - WILLIAMS,	3 / 4	75.0%	42 - SILLS, JAY	6 / 6	100.0%	50 - CALISI, JO	1 / 2	50.0%
12 - PAYNE, BRA	2 / 3	66.6%	20 - CRITCHELOW	3 / 3	100.0%	30 - TAUL, BRAN	1 / 2	50.0%			
Layups	1-9 Ft	10-15 Ft	Over 15 Ft	3 Pointers	Total						
13 / 15	3 / 4	75.0%	1 / 2		17 / 21						81.0%
86.7%			50.0%								

MARSHALL COUNTY

Player	1-9 Ft	10-15 Ft	Over 15 Ft	3 Pointers	Total	Player	1-9 Ft	10-15 Ft	Over 15 Ft	3 Pointers	Total
42 - LANGHI, DA	3 / 8	37.5%	23 - DARNELL, J	0 / 1	0.0%	44 - CLEVIDENCE	0 / 3	0.0%			
00 - SANDERS, R	0 / 3	0.0%	12 - BREWER, RO	0 / 1	0.0%	33 - STORY, JER	0 / 5	0.0%			
Layups	1-9 Ft	10-15 Ft	Over 15 Ft	3 Pointers	Total						
1 / 6	0 / 2	0.0%	0 / 1	0 / 2	2 / 10	3 / 21					14.3%
16.7%	0.0%		0.0%	20.0%							